

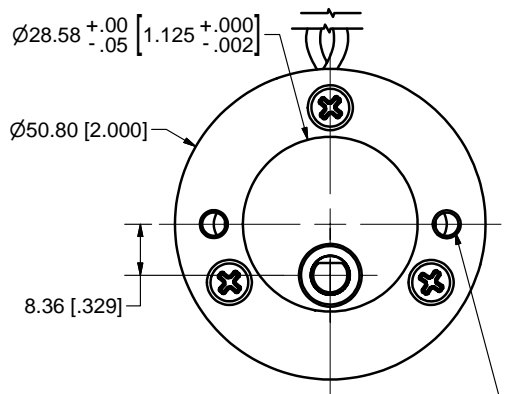
## Product Details

### DC Gearmotor GM9213-2-SP

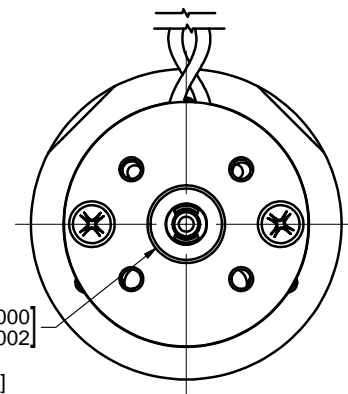
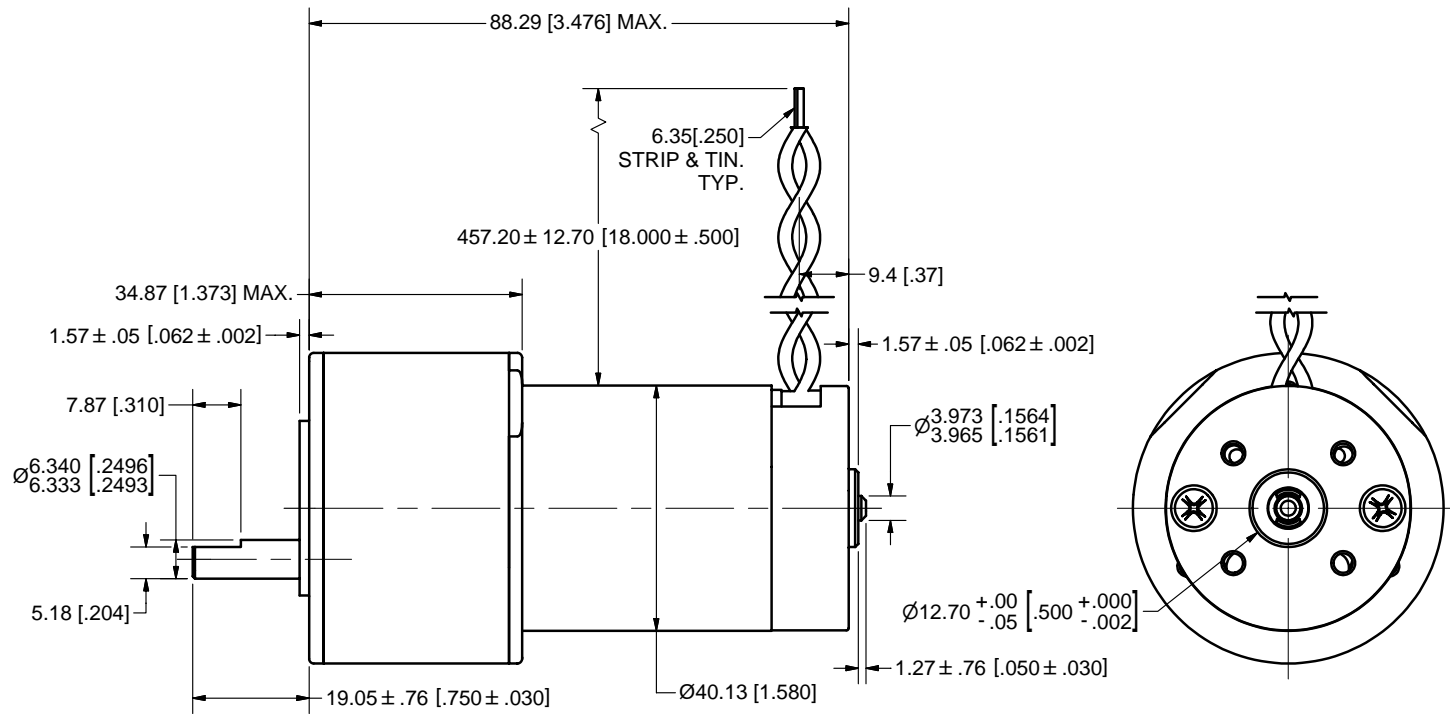
Note: Product photo is for illustrative purposes. Please refer to Engineering Drawing for specifics.

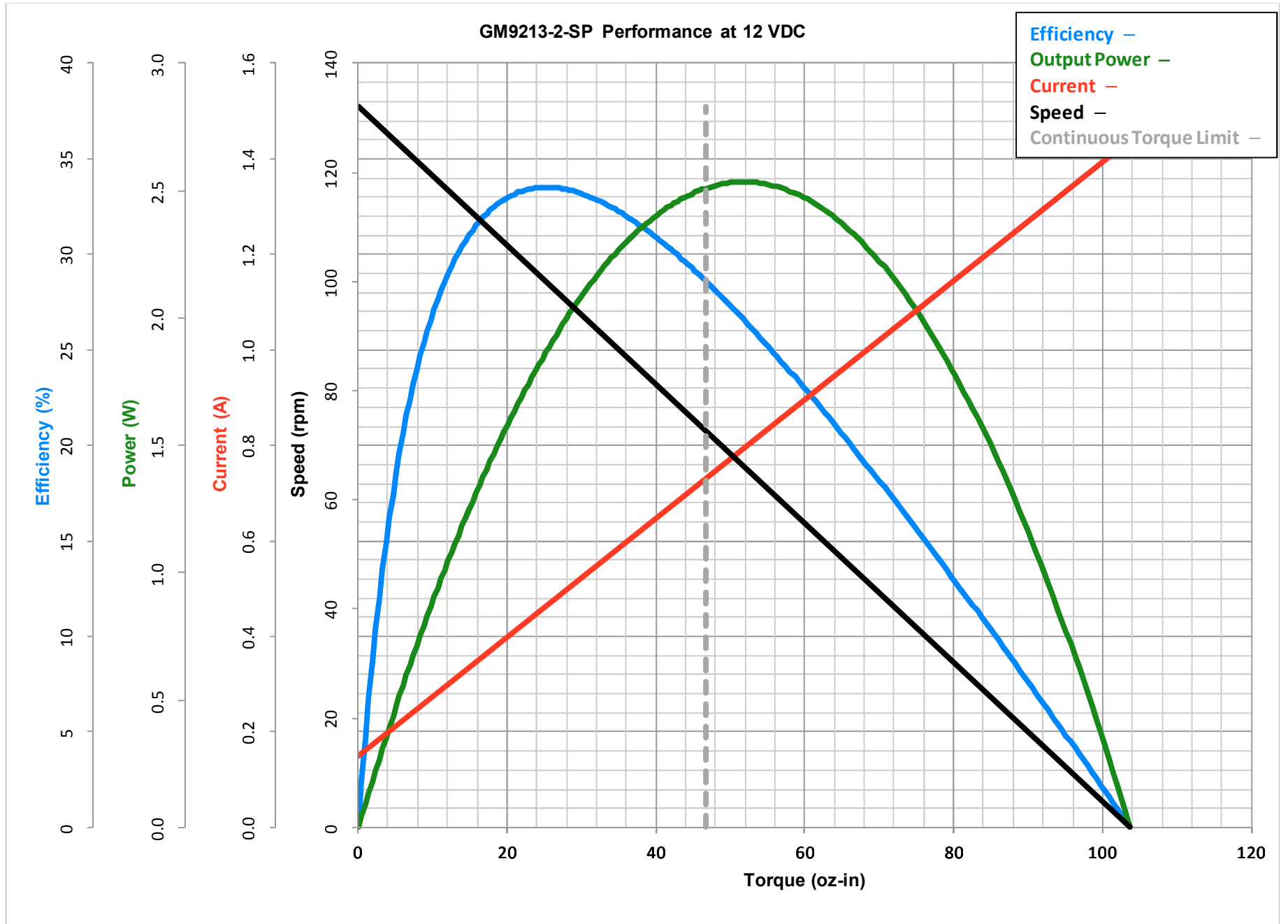


Motor Series	Series GM9000 LO-COG Brush Commutated DC Gearmotors
Price (USD)	\$131.05
Frame Size (Mounting Face) (in)	2
Motor Frame Size (in)	1.58
Gear Frame Size (in)	2.000
Overall Body Length (in)	3.476
Supply Voltage (V)	12
Continuous Output Torque (oz-in)	47
Output Speed @ Cont. Torque (RPM)	24.8
Current @ Cont. Torque (A)	0.81
Continuous Output Power (W)	0.85
No Load Current (A)	0.15
No Load Output Speed (RPM)	129
Peak Current (A)	1.4
Peak Output Torque (oz-in)	100
Motor Constant (oz-in/ $\sqrt{W}$ )	1.94
Motor Torque Constant (oz-in/A)	5.6
Motor Voltage Constant (V/krpm)	4.14
Terminal Resistance (Ohms)	8.33
Inductance (mH)	6.2
Coulomb Friction Torque (oz-in)	0.5
Viscous Damping Factor (oz-in/krpm)	0.011
Electrical Time Constant (ms)	0.74
Mechanical Time Constant (ms)	15
Thermal Time Constant (min)	11
Thermal Resistance ( $^{\circ}C/Watt$ )	19
Maximum Winding Temperature ( $^{\circ}C$ )	155
Rotor Inertia (oz-in-s <sup>2</sup> )	0.00039
Output Bearing	Sleeve
Gear Series	G51A
Gear Ratio (xx.x:1)	19.7
Gear Type	standard spur
Gear Efficiency	0.73
Gear Maximum Torque (oz-in)	175
Encoder Series	n/a
Encoder Resolution (CPR)	n/a
Encoder Output Channels	n/a
Weight (Mass) (oz)	15
Voltage Note	Note: rated voltage of PittmanExpress item is different than catalog reference voltage of base motor.
Torque Warning	N/A



#10-32 UF-2B, 6.35[.250] DEEP NOMINAL  
 2 HOLES 180° APART ON A 38.10[1.500] B.C.





All values are nominal at 25°C. Peak torque and peak current are theoretical values. Curves are shown for reference only. Visit [www.pittman-motors.com](http://www.pittman-motors.com).